

SILVER-INTERLUDE

An earth-tone pool frame blended with a beautiful pool wall pattern creates a pool designed to fit any backyard.

Available in 52" pool walls

PREMIUM SALT FRIENDLY POOL



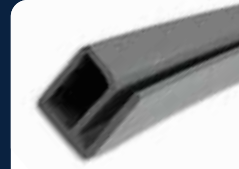
HII HOLLOWELL
INDUSTRIES
INCORPORATED

Quality Features

- Rugged resin 8" top rails and 8" resin verticals in earth-tone color.
- Available in 52" pool walls.
- Maximum strength, corrosion resistant hot-dipped galvanized copper bearing steel pool frame and wall.
- Sophisticated, silver-toned resin top connectors.
- Corrugated pool wall for flexibility and vertical strength.
- Staggered bolt wall closure provides maximum strength and wall stability.
- Large, prepunched skimmer and eyeball return openings eliminate sharp edges that could cut the liner during installation.



- Compac saver oval support system features an easy-to-install, one-part design which provides a stronger installation and a more attractive appearance. Allows larger pools to fit into smaller backyard settings.



- Premium resin bottom rails ensure a long, trouble free life.



- Coated stabilizer rails provide an extra layer of protection against corrosion.



- Vertical end caps, top and bottom are powder coated for additional protection against deterioration.

Available Sizes

Round: 12', 15', 18', 21', 24', 27', 30'

Oval: 12' x 20', 12' x 24', 16' x 28', 16' x 32', 18' x 34', 21' x 41'

IMPORTANT: The "No Diving" and other Warning signage provided must be installed on each pool as indicated in the instructions provided.

NOTE: In some photos of the pools in the brochure (or web site), the "No Diving" and other Warning signage may not be visible, such Warning Signage must be installed as indicated in the instructions provided.

Hollowell Industries, Inc. stands behind every product we produce pursuant to those representations which are stated in our written warranties. Your dealer/builder/installer/contractor is an independent business and not an agent/representative or employee of Hollowell Industries, Inc. We cannot and do not accept any responsibility for any representations, statements or contracts made by any dealer/builder/installer or contractor.